



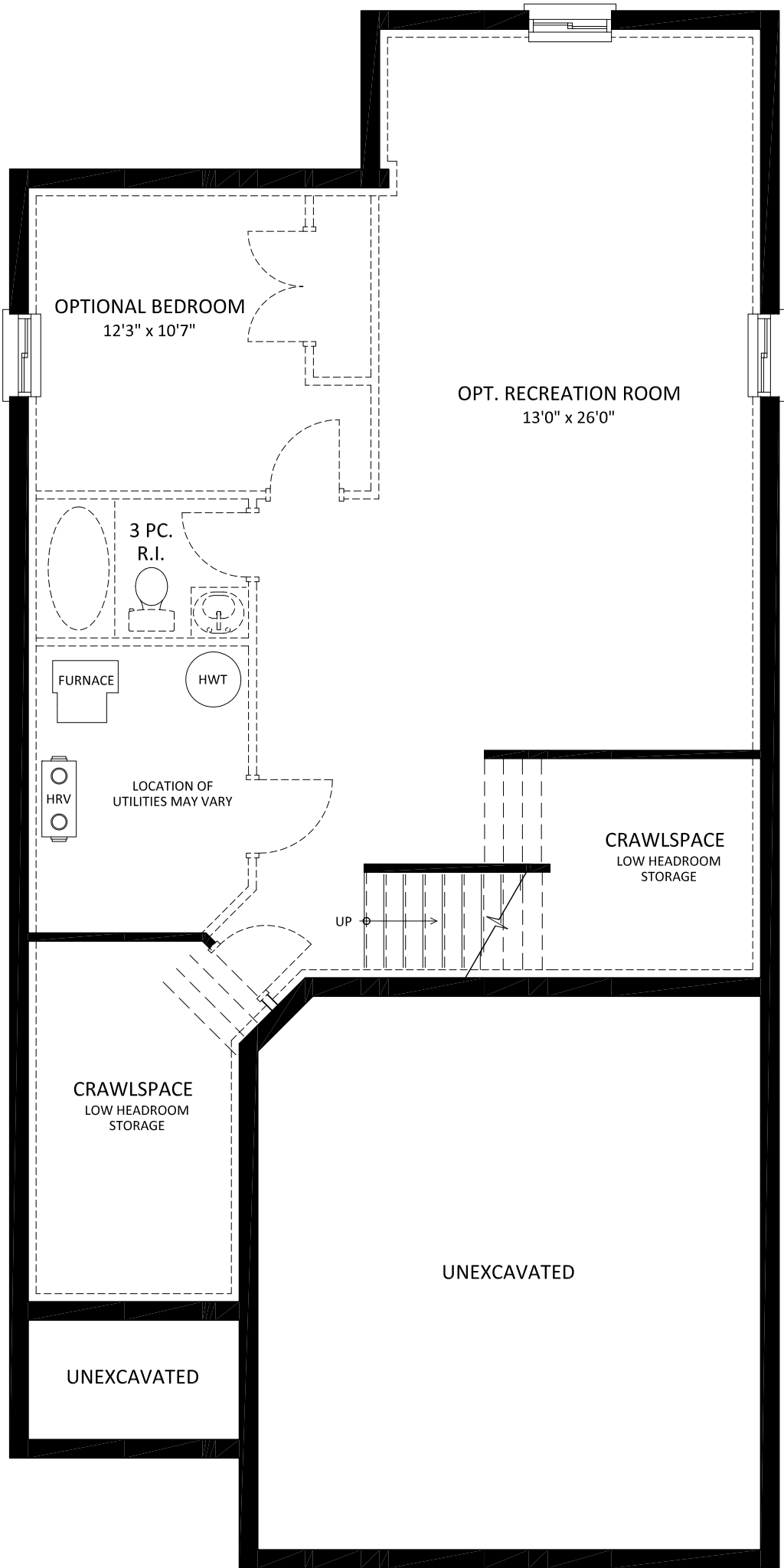
PARIS - ELEVATION A

2282 sq.ft.



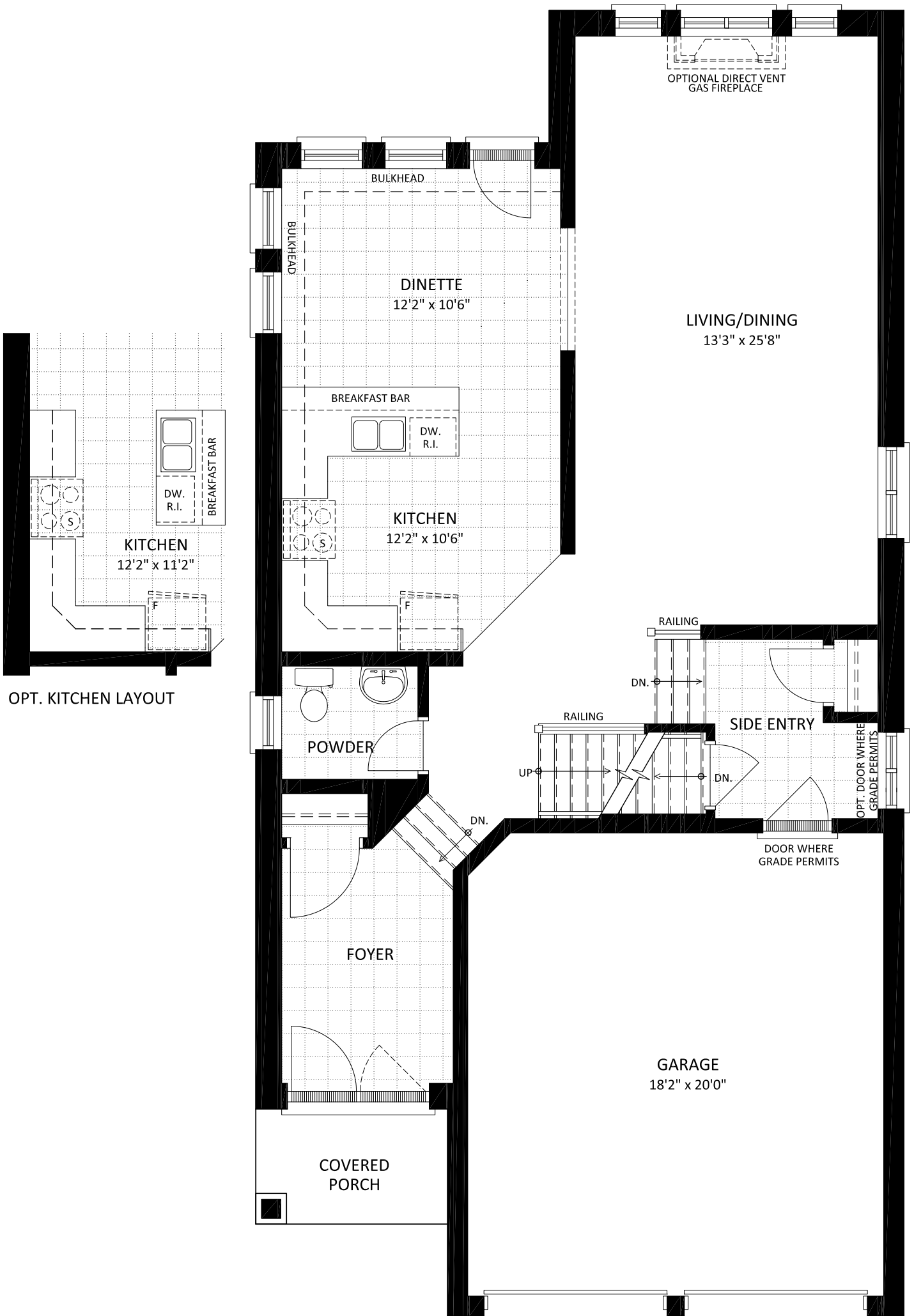
PARIS - ELEVATION B

2290 sq.ft.

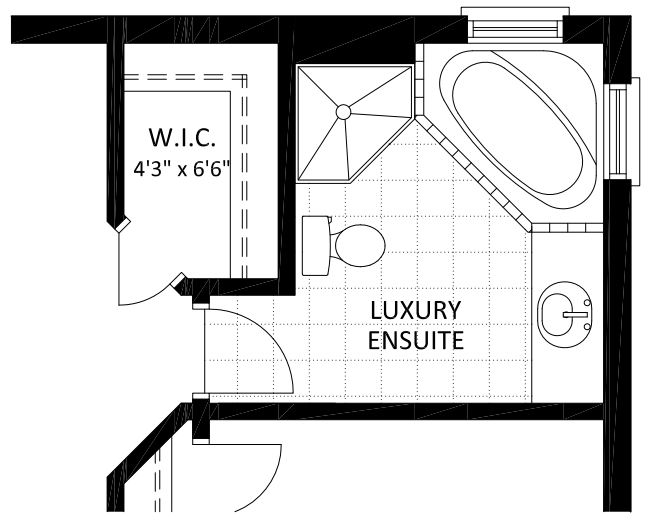


PARIS - BASEMENT FLOOR PLAN

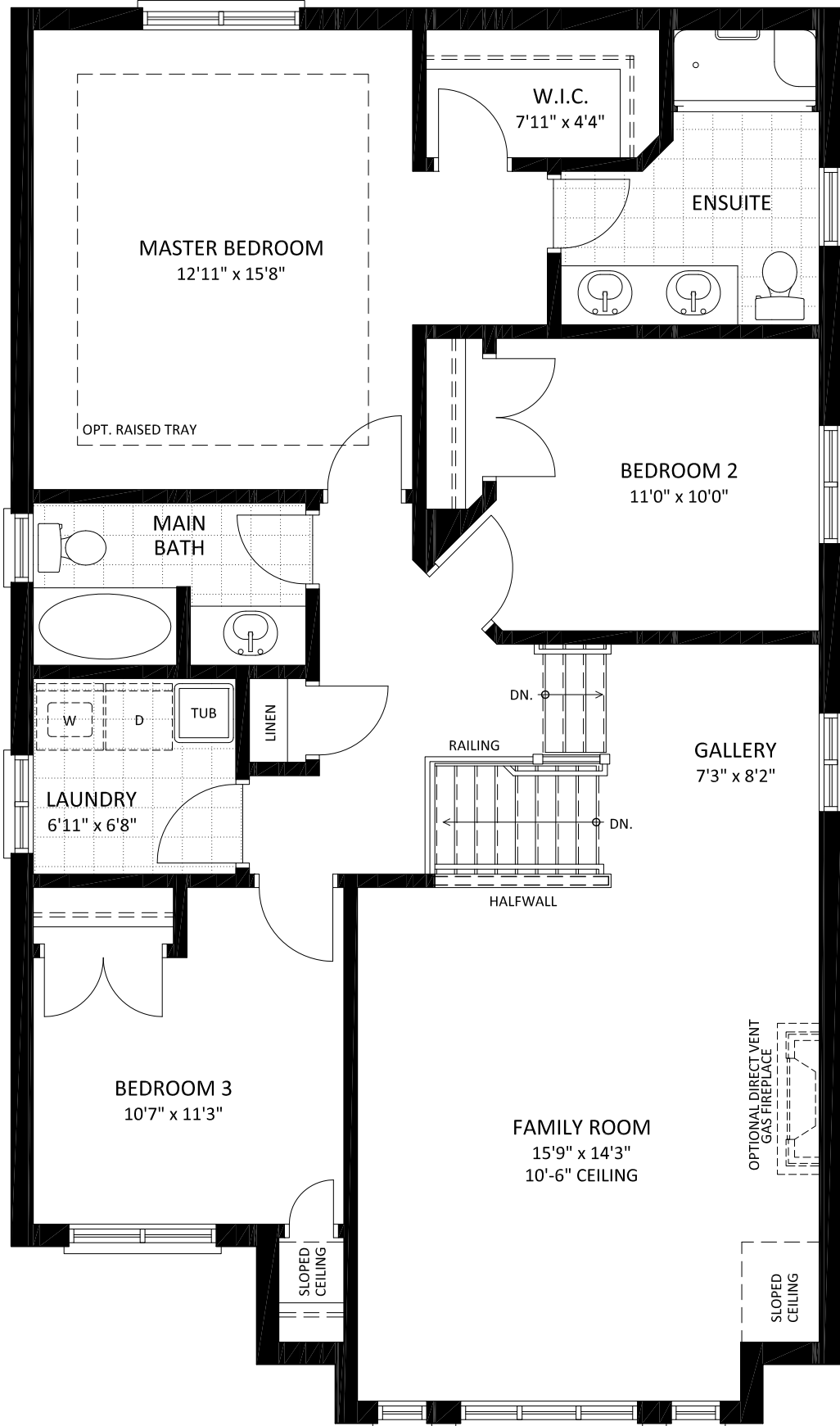
MATERIALS, SPECIFICATIONS, AND FLOOR PLANS ARE SUBJECT TO CHANGE WITHOUT NOTICE. ALL RENDERINGS ARE ARTIST'S CONCEPTIONS. DIMENSIONS AND SQUARE FOOTAGES MAY VARY ON EACH INDIVIDUAL UNIT. GARAGE SIDE MAY VARY DUE TO LOT SELECTED. ACTUAL USABLE SPACE MAY VARY FROM THE STATED FLOOR AREA. ALL REPRESENTATIVE SQUARE FOOTAGES INCLUDE APPLICABLE FINISHED LOWER LEVEL AND OPEN TO BELOW AREAS. E. & O.E.



PARIS - MAIN FLOOR PLAN



OPT. LUXURY ENSUITE LAYOUT



PARIS - SECOND FLOOR PLAN